



## C-Truc # 6

### Main Characteristics

Length Overall	210 ft	(64.01 m)
Beam	40 ft	(12.19 m)
Depth	14 ft	(4.27 m)
Operating Draft	12 ft	(3.66 m)
Light Draft	9 ft	(2.79 m)
Gross Tonnage	451	

### Capacities

Deadweight	1,105.8 LT	(1,123.5 mt)
Cargo Deck Area	142 ft x 30 ft...4,260 ft <sup>2</sup>	(43.2m x 9.14m...394.9 m <sup>2</sup> )
Cargo Deck Loading	540 lbs per ft <sup>2</sup>	(2.6 mt per m <sup>2</sup> )
Deck Cargo	750 LT	(762.04 mt)
Fuel Oil Cargo	68,500 gal	(259.3 m <sup>3</sup> )
Fuel Oil Day Tank	10,181 gal	(38.54 m <sup>3</sup> )
Lube oil	600 gal	(2.77 m <sup>3</sup> )
Liquid Mud	3,420 bbls	(407.80 m <sup>3</sup> )
Dry Bulk	4,200 ft <sup>3</sup>	(118.93 m <sup>3</sup> )
Potable Water	11,430 gal	(43.27 m <sup>3</sup> )
Rig Water	99,036 gal	(374.89 m <sup>3</sup> )

### Performance

Top Speed Max Draft	12.5 knots
Top Speed Light Draft	13.5 knots
Fuel consumption at Operating Draft	
Max Speed	12.5 knots @ 130 gph
Crusing Speed	11 knots @ 110 gph

### Propulsion

Main Engines	2 x QSK 50
Manufacturer	Cummins Diesel
Total Horsepower	3,200 BHP
Main Propulsion	2 x Twin Disc 6:140 gears with NIBRAL Wheels
Rudders	2 x Becker High-Lift Rudders
Bow Tunnel Thruster	1 x 750 HP Schottel - Controllable Pitch
Driven By	1 x Cummins QSK 19

### Dynamic Positioning System

EMI - DP 1
2 Fully Independent USCG Approved DP Systems
2 each Starlink Invicta 210 DGPS Receivers
2 Raytheon Gyrostar II Gyros
2 Young Anemometers
1 MRU pitch and roll sensor
1 Independent backup joystick unit

### Cargo Discharge

Fuel Oil	400 gpm @200ft (90.9 m <sup>3</sup> /h @ 60.9 m)
Rig Fresh Water	400 gpm @200ft (90.9 m <sup>3</sup> /h @ 60.9 m)
Liquid Mud (LM)	1800 gpm @ 150ft (408 m <sup>3</sup> /h @ 45.7m)
Bulk Material (BM)	2 x 1200 ft <sup>3</sup> tanks / 2 x 1000 ft <sup>3</sup> tanks
	82 psi system
	2 x Leroi 735 cfm Compressors

### Accomodations

Accomodations for 18 people composed of:

- 4 x 2 man cabins
- 1 x 3 man cabins
- 2 x 4 man cabins

Walk in Refrigerator & Freezer

Fully Airconditioned and Heated

### Electronics

- 3 x VHF Radio
- 1 x Radio System Compliant with GMDSS A3 Rules
- 1 x Navigation Gyro Compass
- 2 x Radars with ARPA
- 1 x PA / Loud Hailer
- 1 x EPIRB

### Generators

Engine MFG	GM V8-71 Detroit Diesel
Volts Each	230 / 60
K.W.	99
Generator MFG	Delco

### Life Saving Equipment / Fire Monitor

2 x 10 Man Life Rafts	
	Other gear as required by USCG
1 8x6 Fire Monitor	450ft @ 2600 GPM (137.5m @ 24,800 m <sup>3</sup> /h)

### Registration

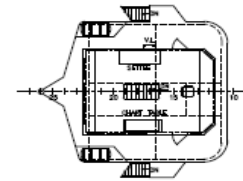
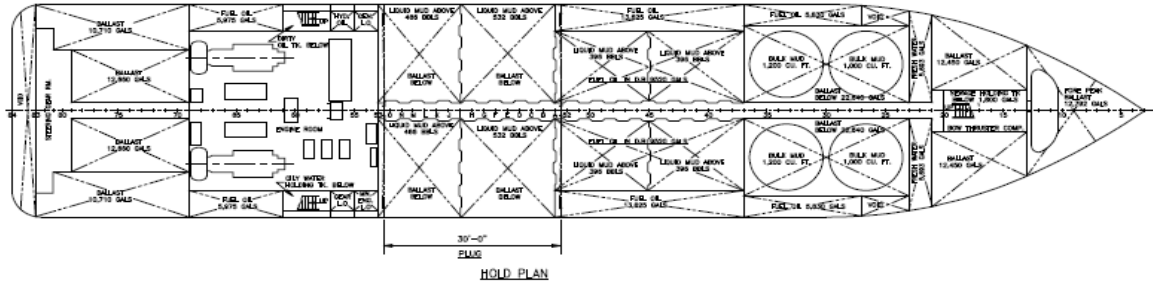
Type	Platform Supply Vessel
Owner/Operator	L&M Botruc Rental, Inc.
USCG Official #	651756
Year Built	1982
Builder	Offshore Trawlers, Inc
Stretched / Refurbished	2010
By	Bollinger Shipyards, Inc
Home Port	New Orleans, LA
Flag	U.S.A.
Classification	Subchapter L OSV ABS Loadline

18692 West Main Street Galliano, LA 70354 Phone (985) 475-5733 FAX (985)475-5669  
www.botruc.com

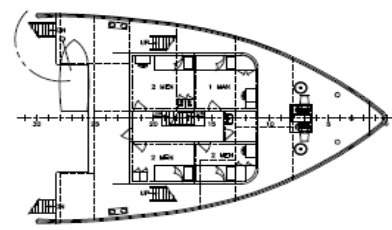
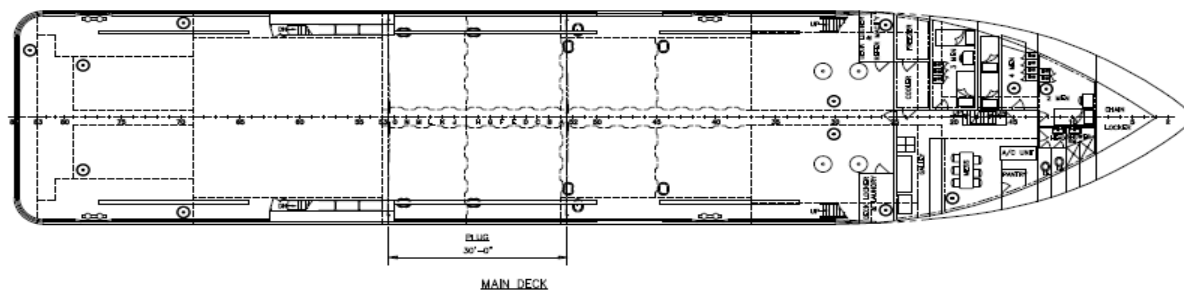
Notice: The Data contained herein is provided to allow users to determine the suitability of the subject equipment. Data may vary from the current condition of equipment which can only be determined by physical inspection. Company has exercised due diligence to ensure that the data contained herein is reasonably accurate. However, Company does not warrant the accuracy or completeness of the data. In no event shall Company be liable for any damages whatsoever arising out of the use of the data contained herein.

# C-TRUC No. 6

## Offshore Supply Vessel



BRIDGE DECK (G2 LEVEL)



POODLE DECK (G1 LEVEL)

