



Botruc # 38

191' PSV-DP1

Botruc # 38

Main Characteristics

Length Overall	191 ft	(58.42 m)
Beam	46 ft	(14.02 m)
Depth	15 ft	(4.57 m)
Operating Draft	12.7 ft	(3.87 m)
Light Draft	5.3 ft	(1.63 m)
Gross Tonnage	198	

Capacities

Deadweight	1,350 LT	(1,371.7 mt)
Cargo Deck Area	120 ft x 38 ft...4,380 ft ²	(36.6m x 11.1m...406.9m ²)
Cargo Deck Loading	540 lbs per ft ²	(2.6 mt per m ²)
Deck Cargo	900 LT	(914.4 mt)
Fuel Oil Cargo	124,700 gal	(472.0 m ³)
Fuel Oil Day Tank	gal	(m ³)
Lube oil	440 gal	(1.7 m ³)
Liquid Mud	2,500 bbls	(397.5 m ³)
Dry Bulk	4,800 ft ³	(135.9 m ³)
Potable Water	11,100	(42.0 m ³)
Rig Water	255,000	(965.3 m ³)

Performance

Top Speed Max Draft	12 knots
Top Speed Light Draft	13 knots
Fuel consumption at Operating Draft	
Max Speed	12.5 knots @ 130 gph
Crusing Speed	11 knots @ 110 gph

Propulsion

Main Engines	2 x KTA 50-M2
Manufacturer	Cummins Diesel
Total Horsepower	3,200 BHP
Main Propulsion	2 x Twin Disc 6.50:1 gears with NIBRAL Wheels
Rudders	2 x Becker High-Lift Rudders
Bow Tunnel Thruster	1 x 640 HP Schottel - Controllable Pitch
Driven By	1 x Cummins KTA-19M3

Dynamic Positioning System

EMI-DP1
2 Fully Independent USCG Approved DP Systems
2 each Starlink Invicta 210 DGPS Receivers
2 Raytheon Gyrostar II Gyros
2 Young Anemometers
1 MRU pitch and roll sensor
1 Independent backup joystick unit

Cargo Discharge

Fuel Oil	400 gpm @ 200ft (90.9 m ³ /h @ 60.9 m)
Rig Fresh Water	400 gpm @ 200ft (90.9 m ³ /h @ 60.9 m)
Liquid Mud (LM)	500 gpm @ 185ft (114 m ³ /h @ 58m)
Bulk Material (BM)	4 x 1200 ft ³ tanks
	82 psi system

Accommodations

Accommodations for 20 people composed of:

2 x 1 man cabins
3 x 2 man cabins
2 x 6 man cabins
Walk in Refrigerator & Freezer
Fully Airconditioned and Heated

Electronics

3 x VHF Radio
1 x Radio System Compliant with GMDSS A3 Rules
1 x Navigation Gyro Compass
2 x Radars with ARPA
1 x PA / Loud Hailer
1 x EPIRB

Generators

Engine MFG	Cummins Diesel
Volts Each	
K.W.	
Generator MFG	

Life Saving Equipment / Fire Monitor

4 x 20 Man Life Rafts	
1 x USCG/SOLAS Approved Rescue Boat	
Other gear as required by USCG/SOLAS	
1 8x6 Fire Monitor	450ft @ 2600 GPM
	(137.5m @ 24,800 m ³ /h)

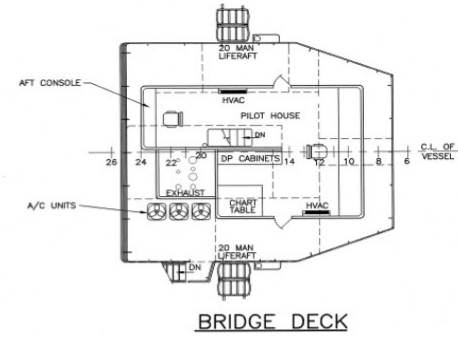
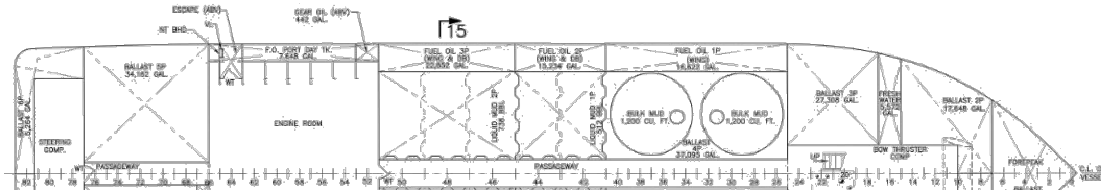
Registration

Type	Platform Supply Vessel
Owner/Operator	L&M Botruc Rental, Inc.
USCG Official #	1155957
Year Built	2004
Builder	Bollinger Shipyards, Inc
Home Port	New Orleans, LA
Flag	U.S.A.
Classification	ABS+A1 Offshore support vessel +AMS+DPS-1, "circle E", SOLAS, USCG Subchapter L, Full Ocean

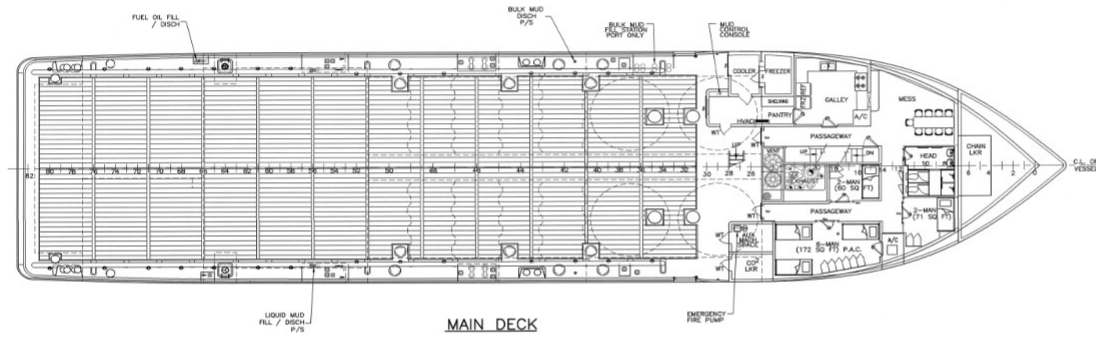
18692 West Main Street Galliano, LA 70354 Phone (985) 475-5733 FAX (985)475-5669
www.botruc.com

Notice: The Data contained herein is provided to allow users to determine the suitability of the subject equipment. Data may vary from the current condition of equipment which can only be determined by physical inspection. Company has exercised due diligence to ensure that the data contained herein is reasonably accurate. However, Company does not warrant the accuracy or completeness of the data. In no event shall Company be liable for any damages whatsoever arising out of the use of the data contained herein.

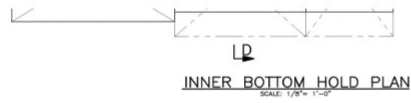
Cheramie Botruc No. 38 Offshore Supply Vessel



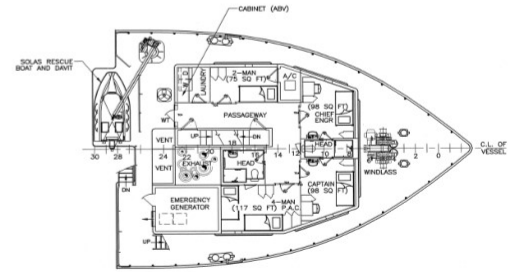
BRIDGE DECK



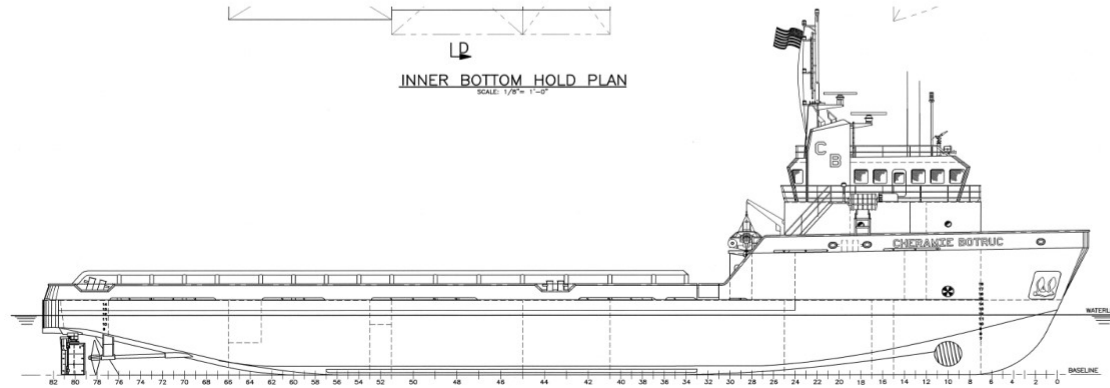
MAIN DECK



INNER BOTTOM HOLD PLAN
SCALE: 1/8" = 1'-0"



FOCSLE DECK



PROFILE